

FEATURES

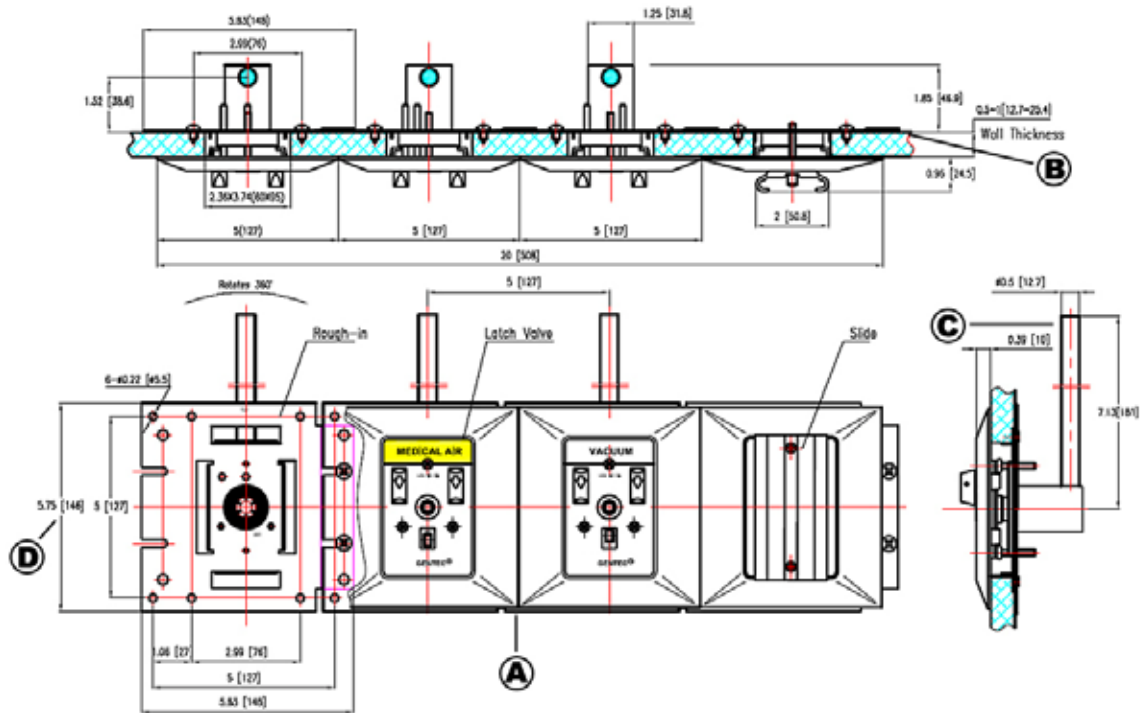
- Accepts only Chemetron gas specific adapters
- Indexed to prevent interchangeability of gas services
- Universal rough-in accepts quick connection (Chemetron[®], Ohmeda[®], Puritan-Bennett[®]) or DISS latch valve assemblies
- Modular design capability
- 100% hydrostatically tested
- Complies with NFPA 99 and CGA G-4.1 standards
- UL Listed



SPECIFICATIONS

- Medical gas outlet(s) shall be manufactured by Genstar Technologies Co., Inc. (GENTEC[®]). Wall outlet shall be designed for concealed piping installation and available for services indicated.
- The latch valve assembly shall be Chemetron quick connect compatible and accept only gas specific Chemetron type quick connect adapters. Each latch valve assembly shall be color-coded for ease of gas identification per the appropriate standards (US or ISO). Latch valve assemblies shall have gas specific pin indexing corresponding to the rough-in assembly to prevent interchangeability of gas services and shall adjust up to 1" for variations in wall thickness.
- Universal rough-in assembly shall include the wall rough-in plate (16 ga.) with inlet tubing silver brazed to the outlet body. Inlet tubing shall be type "K" copper, 1/2" (12.7 mm) OD, extend 6-1/2 inches (165 mm), and swivel 360° for ease of installation. Rough-in assembly shall accept only the specified gas service by use of indexes. Rough-in assembly shall be of modular design to permit on-site ganging of multiple outlets with assurance of accurate alignment and providing 5" centerline spacing. A dust plug and cover shall be provided to protect rough-in assembly from contamination during handling and installation at the job site.
- Rough-in assemblies shall accept any latch valve assembly of the same gas service. The latch valve assembly shall be interchangeable, allowing conversion from one connection style to another without shutting down the medical gas system.
- All positive pressure gas outlets shall have a primary and secondary check valve, where the secondary valve in the rough-in assembly allows servicing of the latch valve assembly without having to disrupt gas service to the outlet.
- Complete outlet shall be delivered to the customer in a gas specific rough-in assembly, a matching gas specific latch valve assembly, both cleaned for oxygen use and in a sealed package, and a trim plate. All assemblies shall be 100% tested for leaks, manufactured to comply with the latest edition of NFPA 99, and UL Listed.

DIMENSIONS



Dimensional Data Notes:

- A. Additional support needed if ganging more than 3 outlets
- B. Wall thickness may vary from 1/2" to 1" (12.7mm to 25.4mm).
- C. 1/2" O.D. (3/8" Nominal) type K copper inlet tube allows 360° swivel on outlet body for entry from any angle.
- D. Inch (mm)

ORDERING INFORMATION

| Gas Service | Chemetron Compatible | |
|---------------|----------------------|-----|
| | Cat No. | Qty |
| Oxygen | 3823U-O | |
| Vacuum | 3823U-V | |
| Medical Air | 3823U-A | |
| Nitrous Oxide | 3823E-2 | |
| WAGD | 3823U-W | |
| Slide | 3820-SLD | |

MATERIAL

| Latch Valve | Rough-in | Trim Plate |
|---------------------|-----------------|----------------|
| Aluminum | Stainless Steel | Cast Aluminum |
| ABS Plastic | ABS Plastic | Powder Coating |
| Steel/Brass+Plating | Neoprene | |
| Stainless Steel | Steel+Plating | |
| Brass | Copper | |
| Neoprene | | |
| Rubber | | |

Ordering Information for Complete Wall Outlets (Includes Latch Valve Assembly, Trim Plate and Rough-in Assembly)
Note: US colors listed. For ISO 32 colors replace "U" with "E" in the above catalog numbers.

Technology for a Better Future



Represented by:

Genstar Technologies Company, Inc.
 4525 Edison Avenue
 Chino, CA 91710, USA
 Tel: 909-606-2726
 Fax: 909-606-6485
 www.gentechhealthcare.com